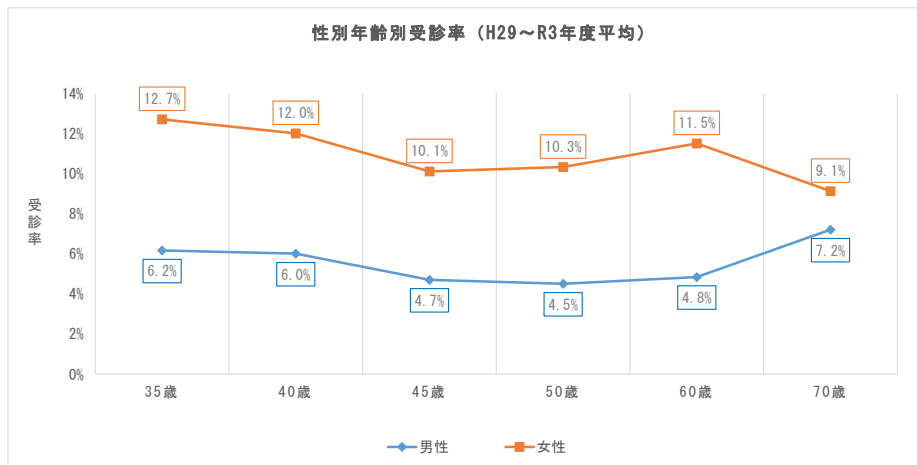
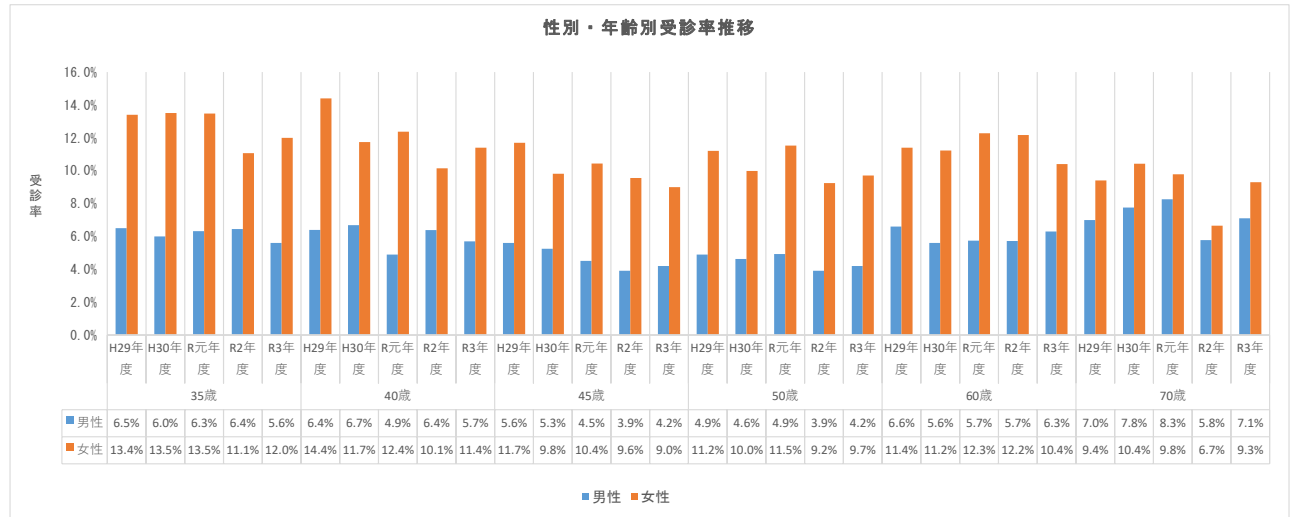
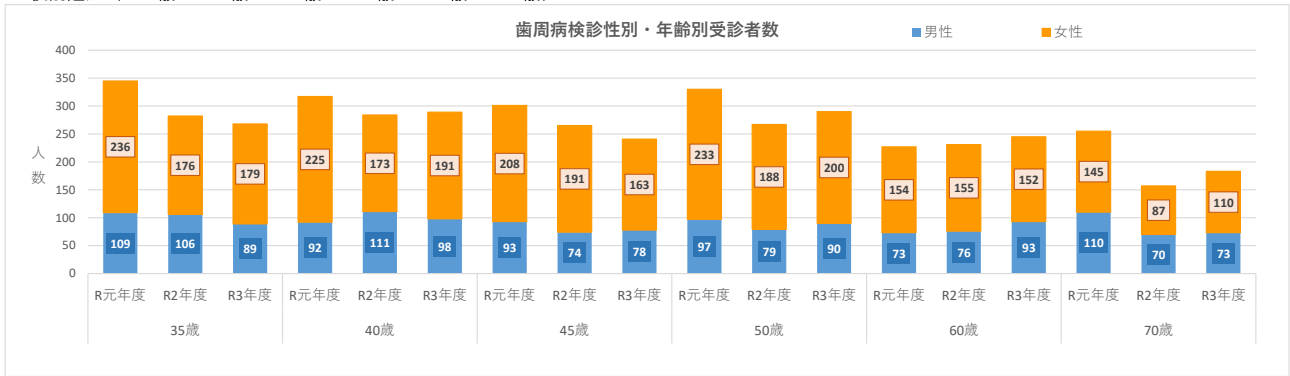


## 2 歯周病検診の受診状況

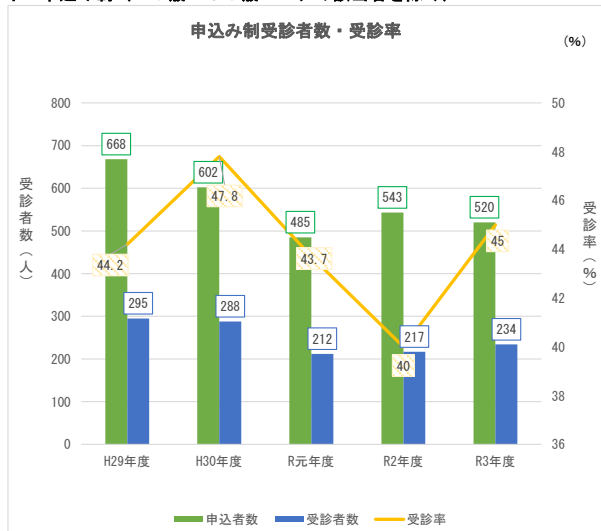
資料 2

### (1) 受診者数・受診率

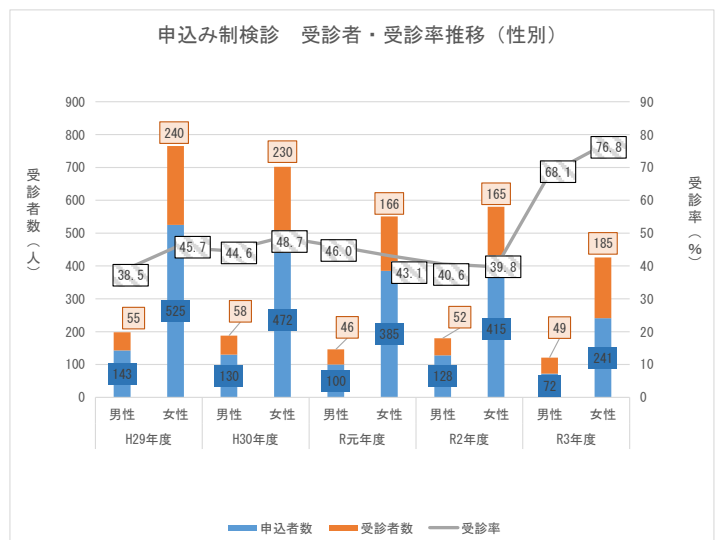
ア 個別通知（35歳・40歳・45歳・50歳・60歳・70歳）

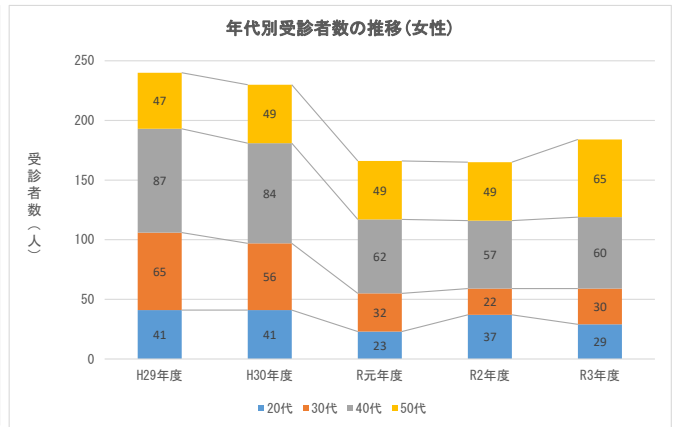
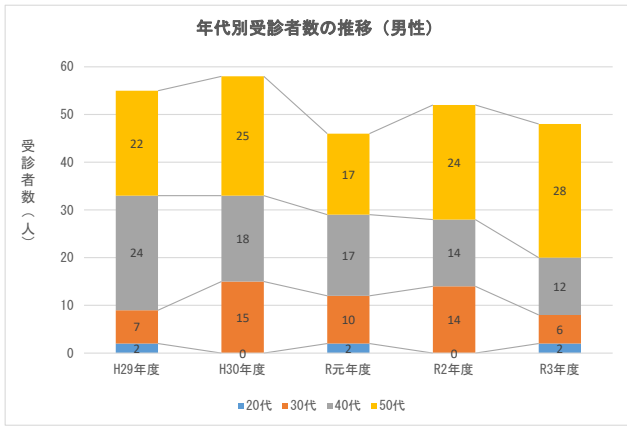


### イ 申込み制（20歳～59歳 \*アの該当者を除く）



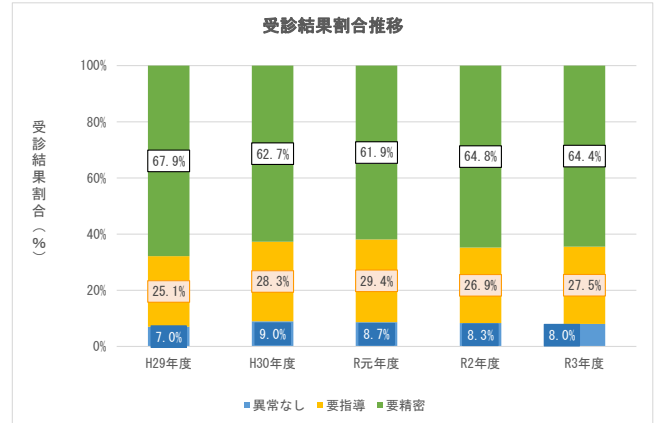
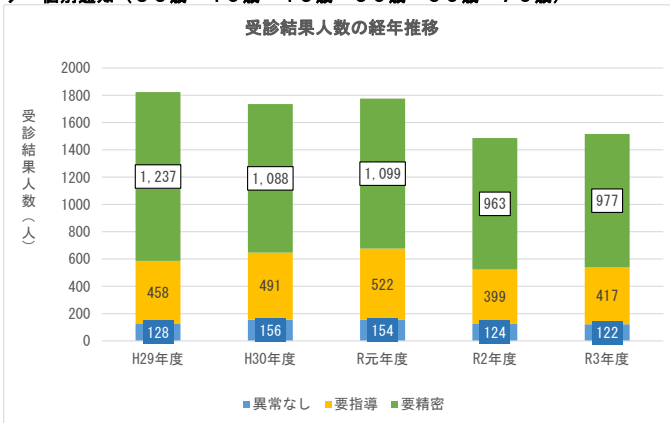
受診率は受診者数/申込者数の割合





## (2) 受診結果

### ア 個別通知 (35歳・40歳・45歳・50歳・60歳・70歳)



### イ 申込み制 (20歳~59歳 \*アの該当者を除く)

